

PERSONAL NAVIGATOR



WEDNESDAY, APRIL 18, 2012

Sunrise: 6:26 a.m. Sunset: 7:08 p.m.
 Evening Attire: Pirate/ Cruise Casual
 All Ashore: Approx. 8:00 a.m.
 All Aboard: 5:30 p.m.
 Wednesday: Partly Cloudy High: 81°F/27°C
 Thursday: Partly Cloudy High: 82°F/28°C

COZUMEL



THE MUPPETS



PG
 43mins

THEATRE
 Forward
 PM

Rating

Run Time: 1

WALT DISNEY THEATRE
 Decks 3 & 4, Forward
 5:45 PM & 8:30 PM

Assistance available at the entrance to the Walt Disney Theatre 30 minutes prior to show time.

Cozumel Port Information

Cozumel, Mexico is an invigorating port of call on a Caribbean Cruise vacation. An island and a city off the eastern coast of Mexico's Yucatan Peninsula, Cozumel is known for some of the world's healthiest coral reefs and rarest natural recreation. This island in the Caribbean Sea is an extremely popular destination for scuba-diving and snorkeling enthusiasts.

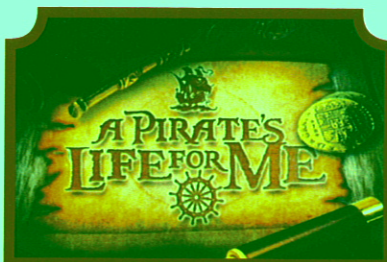
They considered the site sacred to the Moon Goddess, Ixchel, and women would make regular pilgrimages there to pay tribute and to wish for fertility in return.

The arrival of the Spanish in 1518 brought disease and devastation, nearly wiping out the Mayans and leaving the island all but deserted by 1570. It was an outpost for pirates until 1848, when warfare in the Yucatan drove refugees to settle there. A boom in visitors to the island came after 1959, when the famed Jacques Cousteau publicized Cozumel's coral reefs as among the best in the world for scuba diving.

Today, Guests can let their imaginations take flight in the island the Mayans named Cozumel—the "Island of the Swallows"—so long ago.

DOCKING

The ship will dock at the Punta Langosta pier. The pier is located downtown, with walk off access right into the city of Cozumel.



A PIRATE'S LIFE FOR ME

Calling all Pirates, we be! If ye have an adventurous spirit or pirate savvy, come spin the "Wheel of Destiny", fer a treasure trove of fun be ripe for the takin' in this action packed pirate game show.

6:30 & 9:45 p.m.
 D Lounge,
 Deck 4, Midship

Don't Miss:

Chip it Golf

3:15 p.m., Lobby Atrium (12+), Deck 3
 It's par for the course for our Guests 12 and older to compete on our special "greens" in this fun tournament.

Pirate Trivia

4:00 & 8:30 p.m., D Lounge, Deck 4, Midship
 Test your nautical knowledge with our special Pirate Trivia.

Krazy Karaoke

11:00 p.m., The Tube, Deck 4, Aft
 Take to the stage, grab a microphone and sing your favorite song with your Club Host, M.D. DJ Brandon.

TIME ZONE CHANGE



Remember to turn your watches FORWARD 1 HOUR on WEDNESDAY evening and back to standard time on THURSDAY morning.

CHANGE

our clocks upon retiring this evening, or first morning.

NUMBERS

7-3001
 7-3000
 7-1923

DINNER MENU

Animator's Palate: Pirate's Menu
 Enchanted Garden: Pirates Menu
 Royal Court: Pirates Menu

DRINK OF THE DAY

Sunken Treasure (Alcoholic)
 Princess Delight (Non Alcoholic)

IMPORTANT

Fire/Security:
 Medical Emergency:
 Health Center:

FAMILY ACTIVITY HIGHLIGHTS

PIRATE TRIVIA

D Lounge, Deck 4, Midship - 4:00 & 8:30 p.m.

Test your nautical knowledge with your Cruise Staff in this fun Pirate Trivia.

A PIRATE'S LIFE FOR ME

D Lounge, Deck 4, Midship - 6:30 & 9:45 p.m.

Calling all Pirates, we be! If ye have an adventurous spirit or pirate savvy, come spin the "Wheel of Destiny", for a treasure trove of fun be ripe for the takin' in this action packed pirate game show.

ROB THOMPSON ON GUITAR

Deck 12, Forward - 7:15, 8:15, 9:45 & 11:30 p.m.

Join Rob Thompson as he plays live for your listening pleasure under the stars this evening.



MICKEY'S PIRATES IN THE CARIBBEAN

Deck Stage, Deck 11, Midship - 7:45 p.m.

It's a Pirate Celebration, me hearties! Come experience all the pirate fun alongside Captain Mickey Mouse and his famous Pirate Crew. Play, dance and acquire all pirate skills needed to become an official member of Mickey's Pirate Crew!

FAMILY KARAOKE

D Lounge, Deck 4, Midship - 9:00 p.m.

Join your Cruise Staff in D Lounge tonight and sing along to your favorite song - fun for everyone.



ADULT ACTIVITY HIGHLIGHTS



SENSES SPA SEMINARS

Sunrise Stretch - Senses Fitness Center, 7:00 a.m.

Fab Abs - Senses Fitness Center, 7:30 a.m.

Body Sculpt Boot Camp (Fee Applies) - Senses Fitness Center, 9:00 a.m.

Pilates - Senses Fitness Center, 4:00 p.m.

LIVE MUSIC WITH FINE WHINES

La Piazza, Deck 4, Aft - 7:15, 9:30 & 11:15 p.m.

Join Fine Whines as they play live for your listening pleasure in La Piazza this evening.

SPORTS TRIVIA

O'Gills Pub, Deck 4, Aft - 7:15 p.m.

Join your Club Host, Max, as he puts your sports knowledge to the test.

MIXER

Currents, Deck 13, Forward - 10:00 p.m.

Come meet some of your fellow 18 to 21 year old's and share stories of your cruise thus far, before we head over to the Deck Stage for Buccaneer Blast and Club Pirate.

CLUB
18*21

STORM THE VIBE

Vibe, Deck 4, Forward - 11:45 p.m.

Your chance to hang out in Vibe and party to the wee hours of the morning with your fellow 18 to 21 year old's.

KRAZY KARAOKE

The Tube, Deck 4, Aft - 11:00 p.m.

Take to the stage, grab a microphone and sing your favorite song with your Club Host, Max and DJ Brandon.

Chip It
GOLF

It's par for the course for our Guests 12 and older to compete on our special "greens" in this fun tournament.

*Lobby Atrium (12+),
Deck 3, Midship
3:15 p.m.*

KRAZY KARAOKE



Take to the stage, grab a microphone and sing your favorite song with your Club Host, Max and DJ Brandon.

*The Tube (18+),
Deck 4, Aft
11:00 p.m.*

YOUTH ACTIVITIES HIGHLIGHTS

DINE & PLAY

A convenience for families dining at 8:15 p.m., our Youth Activities Counselors will be available at 9:15 p.m. at the entrance of Royal Court, Enchanted Garden and Animator's Palate dining rooms to bring registered children to join the fun in the Youth Activity areas.

CLUBHOUSE KIDS

Is a structured play time offered during secured programming, and is recommended for children ages 3-7. During Clubhouse Kids time in the Oceaneer Club, Counselors will be able to interact and encourage the youngest cruisers in specific activities, ensuring they are engaged.



Deck 5 Midship (7-1440) 7:00 a.m. - 10:30 p.m.

JOURNEY TO NEVERLAND

9:15 a.m.

Join Peter Pan as he takes you on an adventure on the Magic Playfloor.

LITTLE EINSTEIN'S

1:45 p.m.

Your junior cruiser will have the time of their lives with this program inspired by their favorite show with fun activities guaranteed to make them feel like a little genius!



Deck 5 Midship (7-1445) 9:00 a.m. - 12:00 Mid.

SUPER SLOPPY SCIENCE - GASSES & GOOS

1:45 p.m.

Join Professor Make-O-Mess in some of the most extreme experiments you will ever see in the world of Super Sloppy Science!

STITCH'S ADVENTURE SQUAD

3:30 p.m.

Stitch, everyone's favorite alien, is making an appearance to share some of his mischievous games and activities.



Deck 13 Midship (41-14426) 10:00 a.m. - 1:00 a.m.

A PIRATES LIFE FOR ME

11:45 p.m. - D Lounge

Calling all Pirates, we be! If ye have an adventurous spirit or pirate savvy, come spin the "Wheel of Destiny", fer a treasure trove of fun be ripe for the takin' in this action packed pirate game show.



Entrance on Deck 4 Forward (7-9418)

1:00 p.m. - 11:45 p.m.

ESPN DREAM TEAM DRAFT DAY

6:00 p.m.

Play ball! Join the "Commissioner" and engage in this interactive fantasy baseball draft unlike anything you've ever seen! Can YOU draft the greatest baseball team of All-Time?

DANCE PARTY

12:00 a.m. - 2:00 a.m. - D Lounge

Join your fellow teen cruisers for this fun-filled dance party.

YOUTH ACTIVITIES OPEN HOUSE

Open House is an opportunity for all to come and participate in a variety of exciting activities and free time in the Oceaneer Club, Lab, Edge & Vibe throughout the cruise. During these times secured programming will still be offered in the other venue for those looking to check their children into care.



7:45 - 8:05 p.m.
Pirate Games start at 7:30 p.m.
Deck Stage

It's a Pirate Celebration, me hearties!
Come experience all the pirate fun alongside Captain Mickey Mouse and his famous Pirate Crew.
(Weather Permitting)

Buccaneer Blast Fireworks

What's a pirate party without some fireworks to remind the other ships who be ruling the oceans blue?

10:30 p.m.
Deck Stage

Fireworks will be on display Starboard side
Seen best from Deck 11, center pool area, and on Deck 12.

Club Pirate

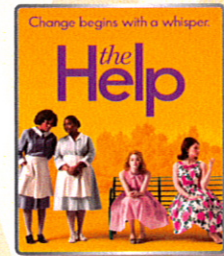
If ye be a fan of Pirates of the Caribbean, tis time to revel in the night at the hottest dance club in all the seven seas with Guest DJ Cide
(Immediately following Buccaneer Blast)

BUENA VISTA THEATRE

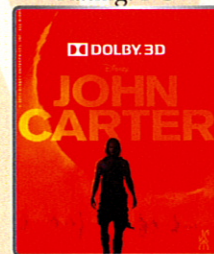
Today's Movies



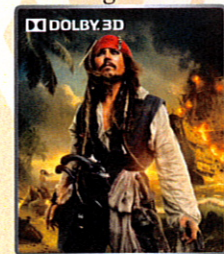
11:45 a.m.
Run Time: 1 hr 40 mins
Rating: PG



2:00 p.m.
Run Time: 2 hrs 26 mins
Rating: PG-13



5:15 & 8:00 p.m.
Run Time: 2 hrs 12 mins
Rating: PG-13



11:00 p.m.
Run Time: 2 hrs 16 mins
Rating: PG-13

	8:30	8:45	9:00	9:15	9:30	9:45	10:00	10:15	10:30	10:45	11:00	11:15	11:30	11:45	12:00	12:15	12:30	12:45	1:00	1:15	1:30	
FUNNELVISION	Hunchback of Notre Dame (G) FunnelVision						The Incredibles (G) FunnelVision															
MOVIES													Tangled (PG) DOLBY 3D Buena Vista Theatre									
CHARACTER																						
FUN FOR ALL AGES	Last Minute Shopping Advice Gangway																					
	Please check your Port Adventure tour tickets for meeting times and locations. Visit the Port Adventures Desk, Deck 5, Midship for any questions.																					
ADULTS	Boot Camp (Fee Applies) Senses Fitness Center																					
ADULTS							Friends of Bill W. Outlook															
Vibe											Open House											
Edge	Open House						Open for Secured Programming						Checkers Challenge									
Oceaneer Lab													Human Bingo						Youth Lunch			
Oceaneer Club	Clubhouse Kids				Parachute Games				Jake and the Neverland Pirates				Pirate Crafts									
	<7:00 a.m. Hangin' in the Club				Journey to Neverland																	
Out & About	Open House in Edge																					

Symbol for activities that will be repeated during the cruise

	1:45	2:00	2:15	2:30	2:45	3:00	3:15	3:30	3:45	4:00	4:15	4:30	4:45	5:00	5:15	5:30	5:45	6:00	6:15	6:30	6:45			
FUNNELVISION	Hercules (G) FunnelVision						Peter Pan (G) FunnelVision																	
MOVIES	The Help (PG-13) Buena Vista Theatre												John Carter (PG-13) DOLBY 3D Buena Vista Theatre >7:27 p.m.											
CHARACTER													Peter Pan Lobby Atrium		Jake Lobby Atrium		Mickey Lobby Atrium		Capt. Jack Preludes		Mickey Lobby Atrium		Goofy Lobby Atrium	
FUN FOR ALL AGES	Pictionary D Lounge		Cruisin' for Trivia D Lounge				Pirate Trivia D Lounge				THE MUPPETS (PG) Walt Disney Theatre >7:28 p.m. A Pirates Life For Me D Lounge													
ADULTS	Xbox™Kinect®- Wipeout O'Gills Pub																							
ADULTS							Pilates Senses Fitness Center																	
Vibe	Video Hunt												ESPN Dream Team Draft Day											
Edge							Dodgeball						Animation Cells											
Oceaneer Lab	Super Sloppy Science - Gasses & Goos				Pirate Crafts				Stitch's Adventure				Youth Dinner				Magic Playfloor							
Oceaneer Club	Little Einstein's		Open House				Disney Animation: Creating a Character				Heffalump Expodishun						So You Want To Be a Pirate?							
Out & About	Dodgeball																							

FOLD

Fold along the dotted lines and take me with you so you don't miss any of the fun!

	7:00	7:15	7:30	7:45	8:00	8:15	8:30	8:45	9:00	9:15	9:30	9:45	10:00	10:15	10:30	10:45	11:00	11:15	11:30	11:45	12:00			
FUNNELVISION	Muppet Treasure Island (G) FunnelVision						Buccaneers Blast followed by Club Pirate FunnelVision						Pirates of the Caribbean: Curse of the Black Pearl FunnelVision (PG-13)											
MOVIES	John Carter (PG-13) DOLBY 3D Buena Vista Theatre												Pirates of the Caribbean: On Stranger Tides (PG-13) Buena Vista Theatre DOLBY 3D > 1:16 a.m.											
CHARACTER	Chip & Dale Lobby Atrium		Pirate Games Deck Stage		Pirates of the Caribbean Deck Stage		Pirate Trivia D Lounge		THE MUPPETS Walt Disney Theatre		A Pirates Life For Me D Lounge		Buccaneers Blast followed by Club Pirate Deck Stage											
FUN FOR ALL AGES	Live Guitar Deck 12, Forward		Live Guitar Deck 12, Forward		Family Karaoke D Lounge		Live Guitar with Rob Thompson Deck 12, Forward		Live Guitar Deck 12, Forward															
ADULTS	Sports Trivia O'Gills Pub		Live Music with Fine Whines La Piazza						Live Music with Fine Whines La Piazza						Krazy Karaoke & Guest DJ Cide The Tube									
ADULTS	Live Music with Fine Whines La Piazza						Club 18*21 Mixer Currents						Fine Whines Live La Piazza						Club 18*21- Storm the Vibe Vibe					
Vibe	Teen AquaDuck						Pump it Up! >11:00pm						Pirate Deck Party						A Pirates Life for Me					
Edge	Tween AquaDuck						Pirate Prep						Pirate Deck Party						A Pirates Life for Me					
Oceaneer Lab	Open House		Animation Cells				POTC: Tides of Fortune				Gaga Ball						Hangin' in the Lab							
Oceaneer Club	Magic Playfloor				Pluto's PJ Party																			
Out & About	Digi Hunt - Meet at Midship Detective Agency, Dk 5																							

FOLD

IN THE SPOTLIGHT SERIES

JUMP UP! SERIES

CLUBHOUSE SERIES

STORYBOOK SERIES

WEDNESDAY, APRIL 18, 2012 - COZUMEL

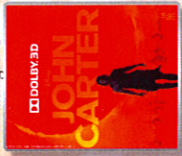
BUENA VISTA THEATRE



11:45 a.m.
Run Time: 1 hr 40 mins
Rating: PG



2:00 p.m.
Run Time: 2 hrs 26 mins
Rating: PG-13



5:15 & 8:00 p.m.
Run Time: 2 hrs 12 mins
Rating: PG-13



11:00 p.m.
Run Time: 2 hrs 16 mins
Rating: PG-13

Character Appearances

PETER PAN

Lobby Atrium - 4:45 p.m.

JAKE THE NEVERLAND PIRATE

Deck 4, Midship Balcony - 5:00 p.m.

CHIP & DALE

Lobby Atrium - 5:00 p.m.

Deck 4, Midship Balcony - 7:00 p.m.

MICKEY MOUSE

Lobby Atrium - 5:15 p.m.

Lobby Atrium - 10:00 p.m.

CAPT. JACK SPARROW

Preludes - 5:30 p.m.

Preludes - 7:00 p.m.

CAPT. HOOK & SMEE

Deck 4, Midship Balcony - 5:30 p.m.

Deck 4, Midship Balcony - 9:30 p.m.

MINNIE MOUSE

Lobby Atrium - 5:30 p.m.

Lobby Atrium - 10:00 p.m.

GOOFLY

Lobby Atrium - 6:00 p.m.

Deck 4, Midship Balcony - 10:00 p.m.

DAISY DUCK

Lobby Atrium - 9:30 p.m.

DONALD DUCK

Lobby Atrium - 9:30 p.m.

For details of daily Disney character appearances, refer to the character line on your Navigator Grid, or the digital character board in the Lobby Atrium.

YOUTH ACTIVITIES THEMED EXPERIENCES

CLUBHOUSE SERIES

focuses on movement and features content which appeals to younger children.

STORYBOOK SERIES

is designed with a strong connection to the Disney classic stories.

JUMP UP! SERIES

includes large ground games & movement-oriented activities.

CREATE & INVENT SERIES

will have a tactile focus allowing children to create and admire their work.

IN THE SPOTLIGHT SERIES

focuses on children's stage presence with lots of activities and enthusiasm.

SOLVE IT! SERIES

are less active, but will challenge children with problem/solutions-based activities.

OUT & ABOUT SERIES

Set outside secured Youth Activities spaces, very active, appealing to Tweens. Recommended 8-14 years

SHIP DIRECTORY

YOUTH ACTIVITIES

DISNEY'S OCEANEER CLUB	DECK 5, Mid	7:00 A.M. - 10:30 P.M.
DISNEY'S OCEANEER LAB	DECK 5, Mid	9:00 A.M. - 12:00 MID.
EDGE	DECK 13, Mid	10:00 A.M. - 1:00 A.M.
IT'S A SMALL WORLD NURSERY	DECK 5, Mid	7:00 A.M. - 11:00 P.M.
VIBE	DECK 4, Fwd	1:00 P.M. - 11:45 P.M.

RECEPTION

AQUADUCK	DECK 12, Mid	9:00 A.M. - 8:00 P.M.
AQUALAB	DECK 12, Aft	10:45 P.M. - 12:00 MID.
DONALD'S POOL	DECK 11, Mid	9:00 A.M. - 7:00 P.M.
GOOLY SPORTS SIMULATORS	DECK 13, Aft	9:00 A.M. - 6:00 P.M.
GOOFLY GOLF	DECK 13, Aft	8:00 A.M. - 10:00 P.M.
GOOFLY'S SPORTS DECK	DECK 12, Aft	8:00 A.M. - 6:00 P.M.
MICKEY'S POOL	DECK 11, Mid	9:00 A.M. - 5:30 P.M.
MICKEY'S SUITE	DECK 11, Mid	9:00 A.M. - 6:00 P.M.
MIDSHIP DETECTIVE AGENCY	DECKS 2 & 5, Mid	9:00 A.M. - 9:00 P.M.
NEWB'S REEF	DECK 11, Mid	9:00 A.M. - 7:00 P.M.
PORT ADVENTURES DESK	DECK 5, Mid	8:00 A.M. - 11:00 A.M.
QUIET COVE POOL	DECK 11, Fwd	6:00 A.M. - 12:00 MID
SATELLITE FALLS	DECK 13, Fwd	6:00 A.M. - 6:30 P.M.
SENSES FITNESS CENTER	DECK 11, Fwd	6:30 A.M. - 10:00 P.M.

GENERAL INFORMATION

ARR-CADE	DECK 11, Aft	24 HOURS
DISNEY VACATION CLUB DESK	DECK 4, Mid	5:00 P.M. - 10:00 P.M.
FUTURE CRUISE SALES DESK	DECK 4, Mid	9:00 A.M. - 11:00 A.M.
		4:00 P.M. - 8:00 P.M.
		7:30 P.M. - 6:30 P.M.
GUEST SERVICES	DECK 3, Mid	24 HOURS
MEDICAL HEALTH CENTER	DECK 1, Fwd	9:30 A.M. - 11:00 A.M.
		4:30 P.M. - 7:00 P.M.
PORT & SHOPPING DESK	DECK 4, Mid	7:30 P.M. - 8:30 P.M.
PRELUDES	DECK 3, Fwd	5:45 P.M. - 6:30 P.M.
		8:00 P.M. - 8:45 P.M.
SENSES SPA AND SALON	DECK 11, Fwd	8:00 A.M. - 10:00 P.M.
SHUTTERS PHOTO GALLERY	DECK 4, Mid	5:00 P.M. - 10:30 P.M.
SHUTTERS DIGITAL	DECK 4, Mid	24 HOURS

SHOPPING

BIBBIDI BOBBIDI BOUTIQUE	DECK 5, Mid PHONES LEAGUE	9:00 A.M. - 9:00 P.M.
MICKEY'S MAINSAIL	DECK 3, Fwd	7:15 P.M. - 11:00 P.M.
SEA TREASURES	DECK 3, Fwd	7:15 P.M. - 11:00 P.M.
VISTA GALLERY	DECK 4, Mid	7:15 P.M. - 10:00 P.M.
WHITECAPS	DECK 3, Fwd	7:15 P.M. - 11:00 P.M.

DINNER MENUS
 Animator's Palate: Pirate's Menu
 Enchanted Garden: Pirate's Menu
 Royal Court: Pirate's Menu
 Dining Times: 5:45pm & 8:15pm

WEATHER FORECAST
 Sunken Treasure (Alcoholic)
 Princess Delight (Non-Alcoholic)
 Wednesday: Partly Cloudy
 High: 81°F/27°C
 Thursday: Partly Cloudy
 High: 82°F/28°C

Evening Attire: Pirate/Cruise Casual

DINING & LOUNGES

BRUNCH

CABANAS CONTINENTAL	DECK 11, Aft	7:00 A.M. - 7:30 A.M.
CABANAS	DECK 11, Aft	7:30 A.M. - 10:30 A.M.
ENCHANTED GARDEN	DECK 2, Mid	8:00 A.M. - 10:00 A.M.
ROYAL COURT	DECK 3, Mid	8:00 A.M. - 9:30 A.M.

LUNCHEON

CABANAS	DECK 11, Aft	12:00 P.M. - 2:15 P.M.
FILLMORE'S FAVORITES	DECK 11, Mid	11:00 A.M. - 6:00 P.M.
LUIGI'S PIZZA	DECK 11, Mid	11:00 A.M. - 6:00 P.M.
ROYAL COURT	DECK 3, Mid	12:00 A.M. - 1:30 P.M.
TOW MATER'S GRILL	DECK 11, Mid	11:00 A.M. - 11:00 P.M.

DINNER

ANIMATOR'S PALATE	DECK 3, Aft	5:45 P.M. & 8:15 P.M.
ENCHANTED GARDEN	DECK 2, Mid	5:45 P.M. & 8:15 P.M.
ROYAL COURT	DECK 3, Mid	5:45 P.M. & 8:15 P.M.
CABANAS TABLE SERVICE	DECK 11, Aft	6:30 P.M. - 8:30 P.M.

LATE NIGHT NACHOS

LUIGI'S PIZZA	DECK 11, Mid	9:30 P.M. - 12:30 A.M.
CABANAS PIRATE BUFFET	DECK 11, Aft	10:30 P.M. - 11:15 P.M.

ADDED FEATURES

BEVERAGE STATION	DECK 11, Mid	24 HOURS
EYE SCREAM	DECK 11, Mid	11:00 A.M. - 11:00 P.M.
ROOM SERVICE	DIAL 0	24 HOURS

ENTERTAINMENT - LOUNGES - BARS

Adults must be 21 and older to consume alcoholic beverages.

BON VOYAGE	DECK 3, Mid	2:00 P.M. - 10:30 P.M.
COVE BAR (18+)	DECK 11, Fwd	11:00 A.M. - 11:00 P.M.
COVE CAFE (18+)	DECK 11, Fwd	7:00 A.M. - 12:00 MID.
CURRENTS (18+)	DECK 13, Fwd	12:00 P.M. - 12:00 MID.
D LOUNGE	DECK 4, Mid	SHOW TIMES
FROZONE	DECK 11, Mid	12:00 P.M. - 11:00 P.M.
LA PLAZZA	DECK 4, Aft	4:30 P.M. - 12:00 MID.
MERIDIAN (18+)	DECK 12, Aft	5:00 P.M. - 12:00 MID.
O'GILLS PUB	DECK 4, Aft	4:00 P.M. - 12:00 MID.
OOH LA LA (18+)	DECK 4, Aft	5:00 P.M. - 12:00 MID.
OUTLOOK	DECK 14, Mid	
SKYLINE (18+)	DECK 4, Aft	5:00 P.M. - 12:00 MID.
THE TUBE (18+)	DECK 4, Aft	10:00 P.M. - 2:00 A.M.
VISTA CAFE	DECK 4, Mid	7:30 A.M. - 10:00 P.M.
WAVES	DECK 12, Aft	11:00 A.M. - 11:00 P.M.

Consumers who order raw or partially cooked, ready-to-eat food of animal origin, are hereby informed that the food is not sufficiently cooked to ensure its safety.

TIME ZONE CHANGE

Remember to turn your clocks **FORWARD 1 HOUR** upon retiring on **WEDNESDAY** evening, or first thing **THURSDAY** morning.



All Ashore: Approx. 8:00 a.m.

All Aboard: 5:30 p.m.

SHIP'S AGENT IN COZUMEL IMPORTANT NUMBERS

ACS (Agencia Consignataria del

Sureste), Calle 6 Norte No. 14 X 10 Y

15 Ave., Cozumel, Q. Roo., Mexico

77660. Tel. 521-987-873-9490

Fire/Security: 7-3001

Medical/Emergency: 7-3000

Health Center: 7-1923

MORE TO ENJOY WHILE ONBOARD

ONBOARD AIRLINE CHECK IN

If you would like to have your boarding passes printed for you onboard and have your luggage taken to the airport for you, register before midnight tonight. If you have Disney Cruise Line airport transfer to Orlando International Airport and fly with one of the participating airlines. Please stop at Guest Services, Deck 3, Midship.



PORT & SHOPPING INFORMATION

Port & Shopping Guides Johan & Marissa will be on the gangway from 9:00 to 10:00 a.m. to answer any last minute Cozumel shopping questions. Don't forget your Shopping Maps, VIP Cards & Shopping Coupons! Check your Shopping Maps for all of the shopping events going on ashore today.



DISNEY VACATION CLUB®

Want to learn more about taking magical vacations year after year? Please see a Disney Vacation Club representative on Deck 4, Midship, or call 7-2805 from your stateroom phone for more information about our group presentations.

SURF @ SEA

\$0.75 per minute, or save money by buying blocks of time. \$55.00 for 100 minutes, \$100.00 for 250 minutes and \$150.00 for 500 minutes. Wireless information sheets are available at Guest Services, Deck 3, Midship. *Please note: Due to satellite connectivity, onboard internet service will be noticeably slower than you may be accustomed to and may at times be interrupted or unavailable.*

ON DEMAND TV

Watch Disney movies, Hollywood features, ABC Shows, and even captioned content, plus much more "On Demand" for FREE in the comfort of your stateroom! Bookmark your movie and come back to watch it later. Press MENU on your stateroom television remote control, and follow the prompts.

ENJOYING THE CRUISE? BOOK ANOTHER ONE TODAY!

Today is a great day to visit the Future Cruise Sales Desk, Deck 4 Midship, or call 7-2848 to find out how you can save 10%, receive up to a \$200 onboard credit, and pay a reduced deposit on your next cruise! Tune to Channel 8 for details.



SENSES SPA & SALON

PAMPER PACKAGE

- 50 minute Full Body Massage
- Foot & Ankle Massage
- Indian Scalp Massage
- 25 Minute Booster Facial

ONLY \$149

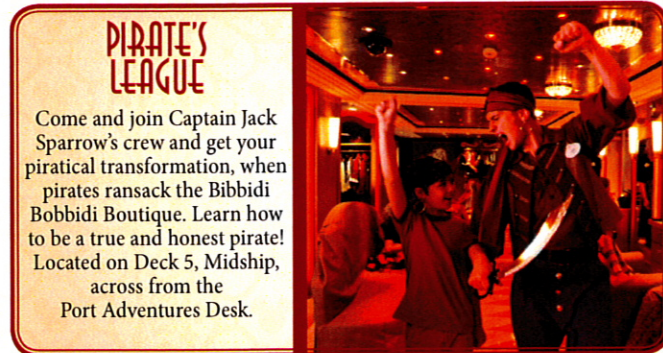
Call Senses Spa & Salon, 7-1465



Disney CRUISE LINE. PORT ADVENTURES

Hola! We have arrived at the island paradise of Cozumel just off the coast of Mexico. This is the perfect day to enjoy the beach on Cozumel or take a tour to visit the ancient Mayan ruins of Tulum on the Mexican mainland. There is a myriad of options so make sure to book your place at the Port Adventures Desk, Deck 5, Midship.

Please check your tour tickets for meeting times and locations. Visit the Port Adventures Desk, Deck 5, Midship, for any questions.



PIRATE'S LEAGUE

Come and join Captain Jack Sparrow's crew and get your piratical transformation, when pirates ransack the Bibbidi Bobbidi Boutique. Learn how to be a true and honest pirate! Located on Deck 5, Midship, across from the Port Adventures Desk.

SHOPPING

BRAND NAME WATCHES

Wide range of name brand watch collections. Men and women styles are available on watch brands such as Fossil, Kenneth Cole, Guess, and DKNY. Whitecaps, Deck 3, Forward.

MAUI JIM

Premium polarized sunglasses. Using technology that revolutionized the sunglass market - patented, color-enhancing treatments used to really pop the colors your eye takes in. Made in Hawaii. Available in Whitecaps, Deck 3, Forward.

BASIC WAVE LOGO COLLECTION

The Disney Cruise Line logo can be captured in fine metals and precious stones, bring home a piece of jewelry designed especially for Disney Cruise Line.

SWAROVSKI

Swarovski crystal glass from Austria that exceeds all others in terms of quality and elegance. Boxed jewelry pieces and Disney figurines now available in Whitecaps, Deck 3, Forward.

CHAMPAGNE FOR EVERYONE!

Exclusive Disney Fantasy, Ooh La La and Swarovski champagne available in Whitecaps, Deck 3, Forward.



Shutters CAMERA OF THE DAY

Olympus TG310, ONLY \$174.95, 14 megapixels, waterproof, shockproof & dust proof. The Perfect beach camera!

**Please note that photos are available for viewing on our interactive photo kiosks approximately five hours after being taken and are only available for purchase during this cruise.*

Due to port regulations, when the ship is docked, the stores will remain closed.

IMPORTANT INFORMATION

Security Notice

All Guests (including children) who wish to disembark the ship are required to present their Key to the World card at the gangway. A photo ID is also required for those Guests who are 18 years of age or older. Guests under the age of 18 are required to have a Parent, Guardian or other responsible adult sign an authorization form at the time it is given out if they wish to go ashore unaccompanied. Authorization forms are available at the gangways and Guest Services.

Please Note:

Please remember to use plenty of sunscreen and mosquito repellent when venturing ashore.

Cold and Flu Reminder

Please wash hands frequently and thoroughly, particularly before meals. Contact the Health Center by dialing 7-1923, should anyone in your party become ill.

Corridor Quiet Hours

As a courtesy to all our Guests, please recognize quiet hallway hours from 10:00 p.m. til 8:00 a.m.

Inclement Weather

For the safety of all Guests, outdoor events may be changed due to unforeseen weather conditions.

Environmental Message

With Disney's commitment to the Environment, please refrain from throwing anything over the Ship's side. Thank you!

No Reserved Seats Policy

As a courtesy to all our Guests, we kindly advise that the saving of seats is not permitted in the Walt Disney Theatre, and the saving of the sun loungers is not permitted on Deck 11, 12, and 13. Items left unattended will be returned to lost and found at Guest Services, Deck 3 Midship.

Smoking

For the comfort of our guests the following areas are designated as Smoking areas: - Promenade Deck (Deck 4), smoking is permitted Port Side, Aft only from 6:00 p.m. to 6:00 a.m.
- Currents - Deck 13, Forward, Port Side.
- Meridian Bar - Deck 12, Aft, Port Side, outside.
- Smoking is permitted on stateroom verandahs. Smoking is prohibited inside all guest staterooms. Guests found smoking in their staterooms will be charged a \$250 stateroom recovery fee.

Walt Disney Theatre

Theatrical performances may use artificial fog, strobe lights, pyrotechnics and other special effects. For the safety of our performers and the comfort of those around you, the use of any photography, video recording device or any electronic equipment is prohibited.

Verandah Safety

Please do not leave any combustible materials on your balcony when not present in your stateroom for safety reasons.